

Program Offering

Retail#	Commercial#	Description
Sockets & Bit Sockets:		
752027	752027X	8 Pc. Metric Hex Bit Set
752028	752028X	8 Pc. SAE Hex Bit Set
752029	752029X	3 Pc. Metric Large Bit Set
752030	752030X	3 Pc. SAE Large Bit Set
752031	752031X	12 Pc. Tamper Proof Torx® Bit Socket Set
752032	752032X	11 Pc. Tamper Proof Torx® Plus Bit Socket Set
752033	752033X	3 Pc. E-Torx® Plus Socket Set
752034	752034X	8 Pc. E-Torx® Plus Socket Set
752035	752035X	10 Pc. Metric Universal Socket Set
752036	752036X	7 Pc. SAE Universal Socket Set
752037	752037X	5 Pc. XZN Triple Square Bit Socket Set
752038	752038X	3 Pc. XZN Tamper Triple Square Bit Socket Set
752039	752039X	9 Pc. Metric Damaged Fastener Socket Set
752040	752040X	9 Pc. SAE Damaged Fastener Socket Set
752041	752041X	8 Pc. Metric Non-Slip Hex Bit Socket Set
752042	752042X	8 Pc. SAE Non-Slip Hex Bit Socket Set
752043	752043X	11 Pc. 1/4" Dr. Metric Shallow Socket Set (6 Pt.)
752044	752044X	11 Pc. 1/4" Dr. SAE Shallow Socket Set (6 Pt.)
752045	752045X	11 Pc. 1/4" Dr. Metric Deep Socket Set (6 Pt.)
752046	752046X	11 Pc. 1/4" Dr. SAE Deep Socket Set (6 Pt.)
752047	752047X	11 Pc. 3/8" Dr. Metric Shallow Socket Set (12 Pt.)
752048	752048X	10 Pc. 3/8" Dr. SAE Shallow Socket Set (12 Pt.)
752049	752049X	11 Pc. 3/8" Dr. Metric Deep Socket Set (6 Pt.)
752050	752050X	10 Pc. 3/8" Dr. SAE Deep Socket Set (6 Pt.)
752051	752051X	12 Pc. 1/2" Dr. Metric Shallow Socket Set (12 Pt.)
752052	752052X	12 Pc. 1/2" Dr. SAE Shallow Socket Set (12 Pt.)
752053	752053X	12 Pc. 1/2" Dr. Metric Deep Socket Set (6 Pt.)
752054	752054X	12 Pc. 1/2" Dr. SAE Deep Socket Set (6 Pt.)
Accessory Sets:		
752055	752055X	11 Pc. Socket Accessories Set
752056	752056X	3 Pc. 1/4", 3/8" & 1/2" Dr. 10" Extension Set
Wrenches & Wrench Sets:		
752058	752058X	11 Pc. SAE Long Pattern Wrench Set
752057	752057X	11 Pc. Metric Long Pattern Wrench Set
755250	755250X	8" Adjustable Wrench
755251	755251X	10" Adjustable Wrench
755252	755252X	12" Adjustable Wrench
Mobile Tool Sets:		
752017	-	66 Pc. SAE/Metric Master Mechanics Tool Set
752018	-	68 Pc. SAE/Metric Master Mechanics Tool Set
752019	-	45 Pc. SAE/Metric Master Mechanics Tool Set
752020	-	101 pc. SAE/Metric Master Mechanics Tool Set
752022	-	205 Pc. SAE/Metric Master Mechanics Tool Set
752023	-	52 Pc. Torx® SAE/MM Master Socket & Bit Socket Set
752024	-	101 Pc. Special Solutions Tool Set
Pliers:		
755602	755602X	6" Diagonal Pliers
755603	755603X	8" Diagonal Pliers
755605	755605X	6" Long Nose Pliers
755606	755606X	8" Long Nose Pliers
755604	755604X	7" Linesman Pliers
755601	755601X	8" Slip Joint Pliers
755608	755608X	9-1/2" Groove Joint Pliers
755609	755609X	12" Groove Joint Pliers
755614	755614X	7" Curved Jaw Locking Pliers-Easy Release Type
755615	755615X	9" Curved Jaw Locking Pliers-Easy Release Type
755616	755616X	6" Long Nose Jaw Locking Pliers-Easy Release Type
755617	755617X	9" Long Nose Jaw Locking Pliers-Easy Release Type
755628	755628X	Multi-Angle INT/EXT Snap Ring Pliers

Retail#	Commercial#	Description
Screwdrivers:		
752059	752059X	9 Pc. Screwdriver & Offset Mini Driver Set
752060	752060X	2 Pc. Extra Long Impact Go-Thru Screwdriver Set
Drive Tools:		
759997	759997X	1/4" Dr. 72 Tooth Ratchet
759998	759998X	3/8" Dr. 72 Tooth Ratchet
759999	759999X	1/2" Dr. 72 Tooth Ratchet
759991	759991X	1/4" Dr. 90 Tooth Ratchet w/Double Injecton Handle
759992	759992X	3/8" Dr. 90 Tooth Ratchet w/Double Injecton Handle
759993	759993X	1/2" Dr. 90 Tooth Ratchet w/Double Injecton Handle
759994	759994X	3/8" Dr. 10" Flex Handle
759995	759995X	1/2" Dr. 17" Flex Handle
759996	759996X	1/2" Dr. 24" Flex Handle
759989	-	3/8" Dr. Digital Torque Wrench
759990	-	1/2" Dr. Digital Torque Wrench
759985	-	1/4" Dr. Dual Way Torque Wrench, 5-25Nm (50 - 250 InLbs)
759986	-	3/8" Dr. Dual Way Torque Wrench, 10-50Nm (7.38 - 36.88 FtLbs)
759987	-	1/2" Dr. Dual Way Torque Wrench, 40-200Nm (29.50 - 147.50 FtLbs)
759988	-	1/2" Dr. Dual Way Torque Wrench, 60-340Nm (44.25 - 258 FtLbs)
Master Mechanic's Drawer Sets:		
752000	-	47 Pc. 1/4" Dr. SAE/Metric Socket Set
752001	-	49 Pc. 3/8" Dr. SAE/Metric Socket Set
752002	-	55 Pc. 1/2" Dr. SAE/Metric Socket Set
752003	-	66 Pc. Torx® SAE/Metric Socket & Bit Socket Set
752004	-	40 Pc. SAE/Metric Non-Slip Socket & Hex Bit Socket Set
752008	-	14 Pc. SAE Non-Slip Combination Wrench Set
752009	-	16 Pc. Metric Non-Slip Combination Wrench Set
752012	-	17 Pc. Double Injected Screwdriver Set
752013	-	7 Pc. Pliers Set
752014	-	4 Pc. Long Reach Pliers
752015	-	6 Pc. Master Snap Ring Pliers Set
752016	-	2 Pc. Snap Ring Pliers Set
752025	-	19 Pc. Ratchet and Accessories Set
752026	-	3 Pc. 90 Tooth Ratchet Handle Set

*X denotes products in commercial color box packaging



Torx® is a trademark of Acument Intellectual Properties, LLC.

Copyright ©2019 Ingersoll Rand. Ingersoll Rand® and Real Tools for Real Work® are the registered trademarks of Ingersoll-Rand Company used under license by Alltrade Tools LLC. All rights reserved.

No Hassle Customer Service 800 Number Listed On All Products and Packaging

Distribution & Returns, Alltrade Tools, LLC Reno, NV 89508, ©Copyright 2019, ALLTRADE TOOLS LLC Rev. 1 Form 1046



REAL TOOLS FOR REAL WORK.™

90 Tooth Ratchets:

Ingersoll Rand 90 Tooth Ratchets feature a strong, smooth 90-tooth gear mechanism that generates increased torque and offers enhanced user control. A 4-degree swing angle makes working in tight spaces easier, while ergonomic double injection handles provide all-day comfort, superior grip and added leverage.

Product Features

- 90 Tooth Precision Machined Gears
- Sealed Head for Increased Durability
- Ergonomic Comfort Grip Handle
- Chrome Vanadium Steel with Mirror-Polish Finish

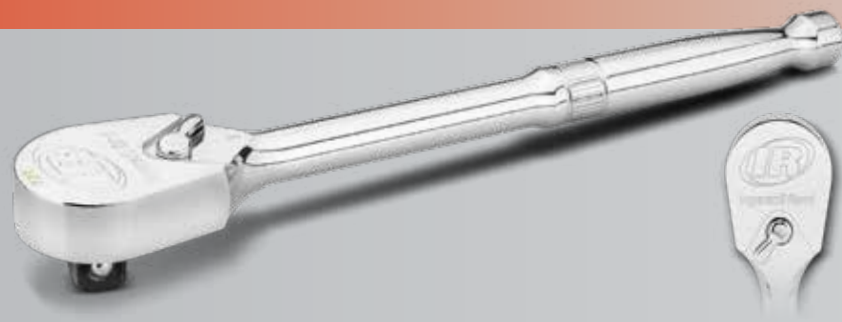


72 Tooth Ratchets:

Ingersoll Rand Technicians Ratchets feature a durable 72-tooth gear mechanism that creates a 5-degree swing angle for speed and efficiency. Full spiral-machined handles feel great and offer added comfort for high torque applications. Oversize ratchet switches make for quick direction changes, while compact teardrop ratchet heads add strength and durability.

Product Features

- 72 Tooth Gears for 5-Degree Swing Angle
- Compact Teardrop Ratchet Head for Added Functionality
- Sealed Head for Increased Durability
- Chrome Vanadium Steel with Mirror-Polish Finish



Sockets (Standard and Deep) & Accessories:

Ingersoll Rand Sockets are constructed with the highest quality Chrome Vanadium Steel material that exceeds ANSI quality standards. IR signature vertical knurling offers better grip and easier handling with greasy hands. Each socket is finished with mirror-polished chrome plating.

Product Features

- 6 Point & 12 Point Options Available
- Chrome Vanadium Steel with Mirror-Polish Finish
- Signature Vertical Knurling for Easier Handling
- Exceeds ANSI Standards for Torque, Fit & Finish



Bit Sockets:

Ingersoll Rand bit sockets use a 2 piece press-fit design for strength and durability. Socket bodies are constructed of Chrome Vanadium Steel and mated to S-2 industrial-grade steel bits. For added durability and corrosion resistance, bits are treated with a Zinc Phosphate finish. IR signature vertical knurling offers better grip and easier handling with greasy hands.

Product Features

- Premium Chrome Vanadium Socket Bodies
- Industrial-Grade S-2 Steel Bits
- Zinc Phosphate Finish for Strength and Durability
- Signature Vertical Knurling for Easier Handling



Socket Trays:

The Ingersoll Rand mechanics tool line features new & innovative socket holders. These patent-pending socket trays keep sockets organized and easy to identify by standing sockets on end for 360-degree visibility. Trays are constructed of durable thermoform plastic and hold sockets securely in place - even when turned upside-down.

Product Features

- Trays Hold Sockets on End for Fast, Easy Identification
- Won't Tip Over Like Socket Rails
- Durable Thermoform Construction
- Exclusive, Patent-Pending Design



Adjustable Wrenches:

Ingersoll Rand Adjustable Wrenches are built from drop-forged chrome vanadium steel and finished with industrial-grade Black Phosphate for maximum durability and corrosion resistance. Wrench jaws have SAE and Metric size scales for quick reference and feature a wide jaw design for added range and application. Thick I-beam handles add rigidity and grip taking the sting out of high torque application.

Product Features

- Premium Chrome Vanadium Steel Construction
- Industrial-Grade with Black Phosphate Finish
- Wide Jaw Design Increased Range
- Laser-Etched Size Markings in SAE & Metric



Wrenches:

Ingersoll Rand combination wrenches exceed industry standards for length, torque and hardness. Each wrench is constructed of premium chrome vanadium steel with a fine mirror finish. Box ends have a 15-degree offset for better reach and fewer bruised knuckles. All IR wrenches are extra-long pattern for added reach and torque.

Product Features

- Premium Chrome Vanadium Steel Construction
- Exceeds ANSI Standards for Quality & Function
- 15-Degree Offset Box End for Easy Access
- Extra-Long Pattern for Added Torque

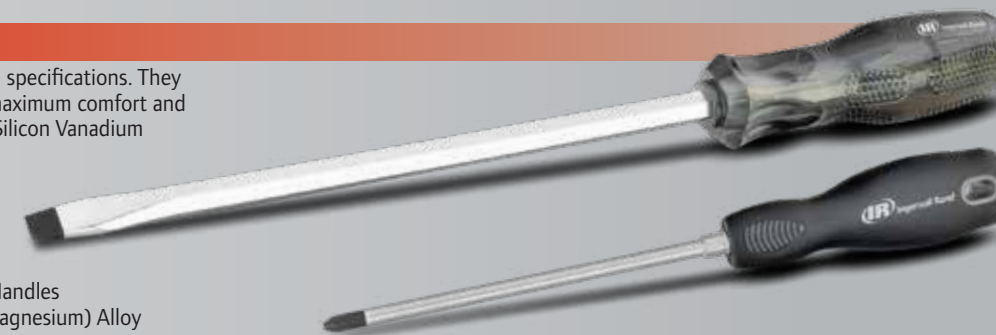


Screwdrivers:

Ingersoll Rand screwdrivers exceed ANSI specifications. They feature premium trilobular handles for maximum comfort and grip. Shafts are constructed of (SVCM) Silicon Vanadium Chrome Magnesium for added torque. Large size drivers have hex bolsters, and sizes are marked on the handle caps for easy size ID.

Product Features

- Double Injection Soft Grip Trilobular Handles
- SVCM (Silicon Vanadium Chromium Magnesium) Alloy Steel Blades
- Sandblasted and Magnetized Tips
- Hex Bolsters for Added Torque when Needed



Pliers:

Ingersoll Rand pliers are made from forged Chrome Moly (CrMo) steel that's fully polished and coated for durability and corrosion resistance. Each tool features a textured double dipped grip for all-day comfort and control on the job. All pliers jaws are precision machined for precise fit, while cutting edges are induction hardened to stay sharper longer.

Product Features

- Forged (CrMo) Chrome Moly Steel Construction
- Precision Machined Jaws
- Induction-Hardened Cutting Edges
- Textured Double-Dipped Handles for Sure Grip



Torque Wrenches:

Ingersoll Rand Torque Wrenches exceed industry standards and are calibrated to +/- 4% accuracy. They feature easy-to-read laser etched torque scales in Foot Pounds and Newton Meters. Spring-loaded locking collars allow for quick and easy torque adjustments while heavy-duty anodized aluminum knurled handles provide superior grip and control.

Product Features

- Easy-Read Dual Torque Scales
- Exceeds Industry Standard with +/- 4% Accuracy
- Spring Loaded Locking Collar Allows for Easy Torque Adjustments
- Anodized Knurled Aluminum Handles for Superior Grip



Non-Slip Damaged Fastener Sockets & Bit Sockets:

The IR TECH SOLUTIONS™ Line is made up of a variety of specialized problem solver tools for every technician. These tools were developed by tool users to solve problems caused by rounded, damaged, frozen and rusted fasteners.

At the heart of these sets are IR Non-Slip Damaged Fastener Sockets and Bit Sockets. These specialized tools have a patented design that not only prevents fasteners from stripping, but also can remove already stripped and damaged fasteners up to 85% rounded. And they're suitable for use on new, undamaged fasteners as well.



Non-Slip Socket



Non-Slip Hex Bit Socket

Non-Slip Sockets:

Features

- Patented Design Sockets Grip Tighter as They Turn & Prevents Rounding
- Removes: Rusted, Damaged, Severely Rounded Nuts & Bolts with Ease
- Can Also Be Used as Standard Sockets
- Works on All Standard Hex Type Fasteners
- Available in SAE & Metric Sizes



Non-Slip Hex Bit Sockets:

Features

- Patented Twist Design Grips Tighter As They Turn
- Prevents Fasteners from Rounding
- Removes: Rusted, Damaged, Severely Rounded Hex Head Fasteners with Ease
- Can Also Be Used Just Like Standard Hex Bit Sockets
- Works on All Standard Hex Type Fasteners
- Available Sets in SAE & Metric Sizes

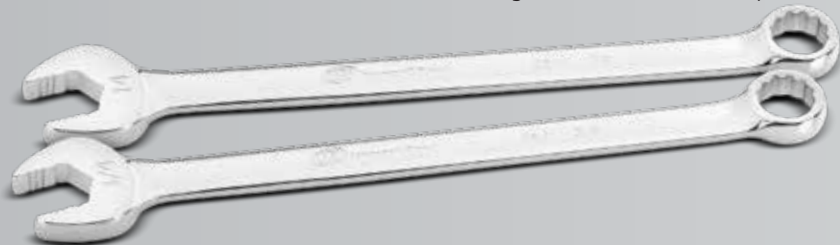


Non-Slip Wrenches:

Ingersoll Rand TECH SOLUTIONS™ combination wrenches exceed industry standards for length, torque and hardness. Each wrench is constructed of premium chrome vanadium steel polished to a fine mirror finish. Open ends feature a Non-Slip Design that grips and holds fasteners to prevent stripping. Box ends have a 15 degree offset for better reach and fewer bruised knuckles. Handles are extra-long for added reach and torque.

Features

- Premium Chrome Vanadium Steel Construction
- Exceeds ANSI Standards for Torque, Length and Hardness
- Non-Slip Design Grips and Holds Fasteners to Prevent Stripping
- 15-Degree Offset Box End for Easy Reach
- Extra-Long Handles for Added Torque



TECH SOLUTIONS™ Sets Include: Socket Trays / Master Mechanic's Drawer Sets / Mobile Tools Sets:

752039 - TECH SOLUTIONS™
- 9 pc. Metric Non-Slip Socket Set • 1/4" Drive • 3/8" Drive



752040 - TECH SOLUTIONS™
- 9 pc. SAE Non-Slip Socket Set • 1/4" Drive • 3/8" Drive



752041 - TECH SOLUTIONS™
- 8 pc. Metric Non-Slip Hex Bit Socket Set
• 1/4" Drive • 3/8" Drive



752042 - TECH SOLUTIONS™
- 8 pc. SAE Non-Slip Hex Bit Socket Set • 1/4" Drive • 3/8" Drive



Features:

Ingersoll Rand EVA Tray Master Mechanic's Tool Sets feature laser-cut foam organizer trays that drop easily into any tool chest drawer. Each set combines the most commonly used technician hand tools with 100% size coverage. You can easily build a complete tool collection or add to an existing one with these convenient tool tray sets.

All EVA trays are finished with a brushed aluminum like top layer that adds style and durability to each set. Each tray is clearly marked with the size and type of each tool so you spend less time searching for the right tool and get the job done faster.

Product Features

- Master Technicians Tool Sets with Comprehensive Contents Coverage
- Brushed Aluminum Accented EVA Organization Trays
- Sizes Clearly Printed on Trays for Easy Identification of Tools

Sets Include:

752000
- 47 pc. SAE/Metric Master Socket & Accessory Set • 1/4" Drive



752001
- 49 pc. SAE/Metric Master Socket & Accessory Set • 3/8" Drive



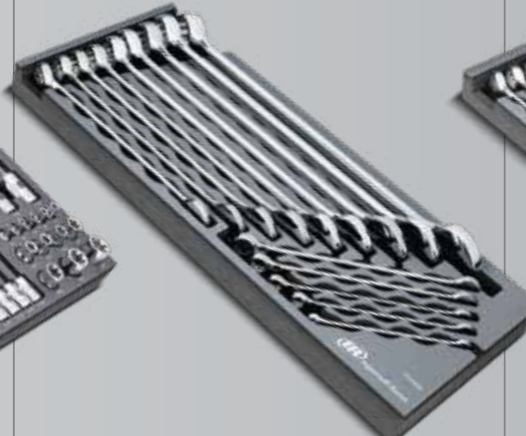
752002
- 54 pc. SAE/Metric Master Socket & Accessory Set • 1/2" Drive



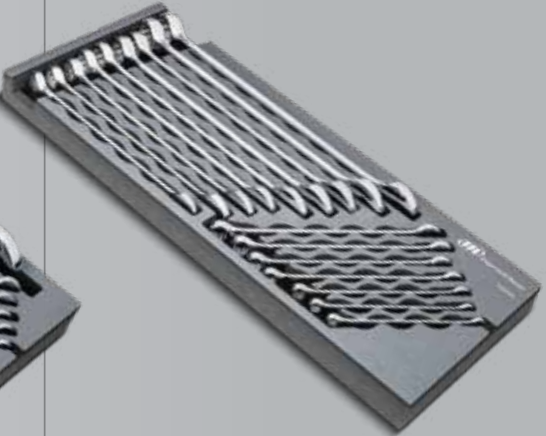
752003 - TECH SOLUTIONS™
- 466 pc. Torx® SAE/Metric Socket & Bit Socket Set • 1/4" Drive • 3/8" Drive • 1/2" Drive



752008 - TECH SOLUTIONS™
- 14 pc. SAE Non-Slip Combination Wrench Set



752009 - TECH SOLUTIONS™
- 16 pc. Metric Non-Slip Combination Wrench Set



752012
- 17 pc. Double Injection Screwdriver Set



752013
- 7 pc. Master Pliers Set



752014
- 4 pc. Long Reach Pliers Set



Features:

Ingersoll Rand Mobile Tool Sets combine the most commonly used technician tools in a comprehensive all-in-one collection. From 1/4, 3/8 and 1/2-inch drive sockets and accessories to top quality 72 tooth technician's ratchets, specialty bit sockets and extra-long pattern wrenches, we've hand-selected the right tool mix for maximum job coverage.

All IR Mobile Tool Sets include durable, high-quality storage cases that break down with removable hinges for easy storage in toolbox drawers and reassemble in seconds for transporting tools to the jobsite. A broad range of tool set sizes and contents ensures there's a set for every Tech.

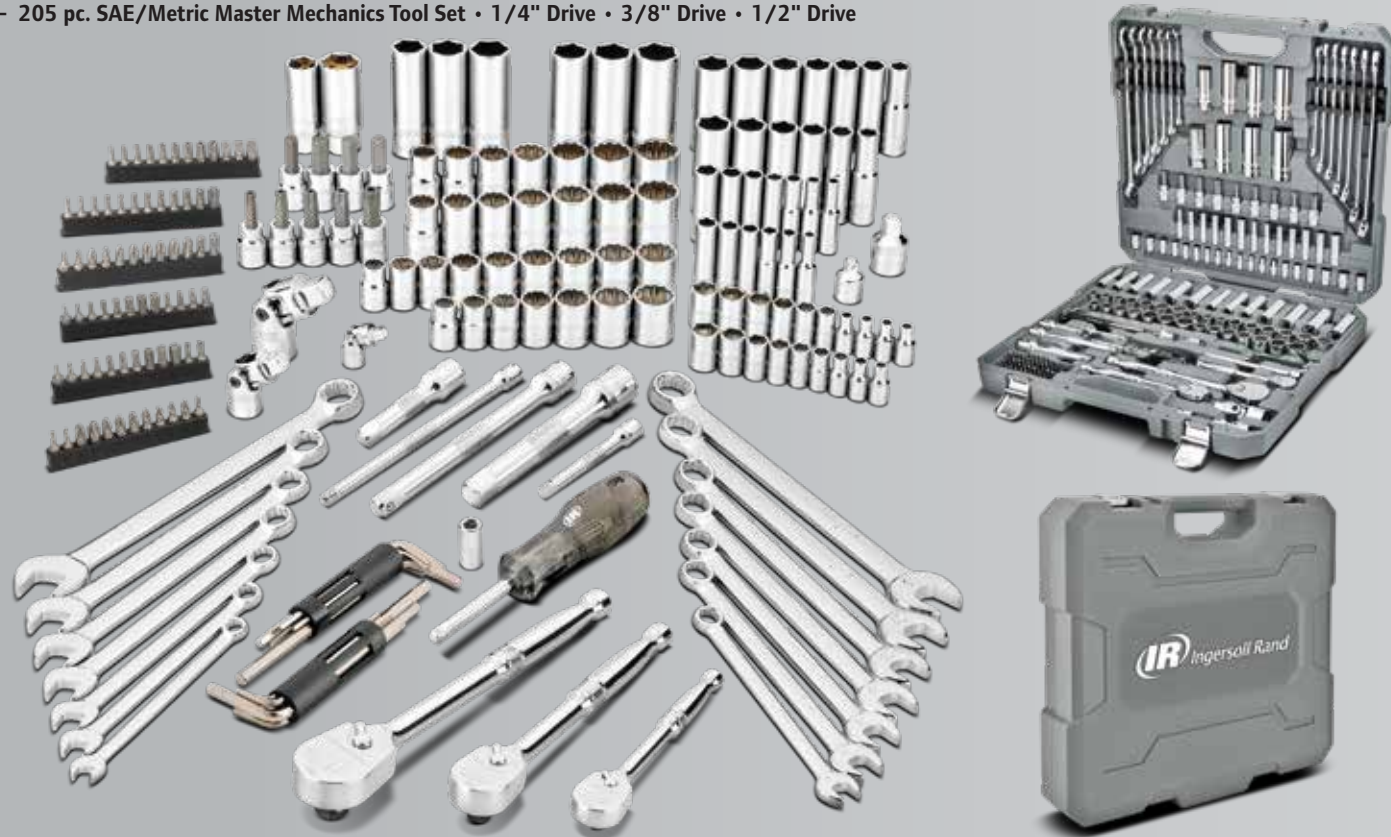
Product Features

- Durable Heavy-Duty IR Signature Cases
- Removable Hinge Pins for Easy Separation and Assembly of Cases
- Core Usable Contents Techs use Every Day



Sets Include:

752022
- 205 pc. SAE/Metric Master Mechanics Tool Set • 1/4" Drive • 3/8" Drive • 1/2" Drive



752020
- 101 pc. SAE/Metric Master Mechanics Tool Set • 1/4" Drive • 3/8" Drive



752019
- 45 pc. SAE/Metric Master Mechanics Tool Set • 1/2" Drive



752018
- 68 pc. SAE/Metric Master Mechanics Tool Set • 3/8" Drive



752017
- 66 pc. SAE/Metric Master Mechanics Tool Set • 1/4" Drive



752023 - TECH SOLUTIONS™
- 52 pc. Torx® SAE/Metric Master Socket & Bit Socket Set • 1/4" Drive • 3/8" Drive • 1/2" Drive



752024 - TECH SOLUTIONS™
- 101 pc. Special Solutions Tool Set • 1/4" Drive • 3/8" Drive

