



POWERBUILT®

寶力優工具



POWERBUILT®

寶力優工具

台北市114內湖區洲子街81號6樓
6F, No.81, Zhouzi Street, Neihu Dist.,
Taipei City 114, Taiwan (R.O.C.)
Tel: +886-2-66060366 Fax: +886-2-26584188
Email: alex@alltrade.com.tw <https://www.powerbuilt-tw.net/>

© Copyright 2024 Alltrade Co., Ltd. Rev. 1 Form 2402



152 pc.
公/英制汽車修工具組 - 642453
MASTER MECHANICS SERVICE SET - SAE AND METRIC
1/4 3/8 1/2
CONTENTS
1/4" DRIVE

- 7 pc. 1/4" Dr. SAE Sockets (6 Pt.): 3/16, 7/32, 1/4, 9/32, 5/16, 11/32, 3/8"
- 8 pc. 1/4" Dr. Metric Sockets (6 Pt.): 4, 5, 6, 7, 8, 9, 10, 11 mm
- 3 pc. 1/4" Dr. SAE Deep Sockets (6 Pt.): 7/32, 1/4, 5/16"
- 3 pc. 1/4" Dr. Metric Deep Sockets (6 Pt.): 7, 8, 10 mm
- 1 pc. 1/4" Dr. 72 Tooth Sealed Head Ratchet
- 1 pc. 1/4" Dr. Bit Coupler
- 1 pc. 1/4" Dr. Spinner Handle
- 1 pc. 1/4" Dr. 3" Extension

3/8" DRIVE

- 6 pc. 3/8" Dr. SAE Sockets (12 Pt.): 7/16, 1/2, 9/16, 5/8, 11/16, 3/4"
- 6 pc. 3/8" Dr. Metric Sockets (12 Pt.): 10, 12, 13, 14, 15, 17 mm
- 6 pc. 3/8" Dr. SAE Deep Sockets (6 Pt.): 3/8, 7/16, 1/2, 9/16, 5/8, 11/16"
- 5 pc. 3/8" Dr. Metric Deep Sockets (6 Pt.): 10, 12, 13, 14, 15 mm
- 3 pc. 3/8" Dr. SAE Hex Bit Sockets: SAE: 1/4, 5/16, 3/8"
- 2 pc. 3/8" Dr. Metric Hex Bit Sockets: 8, 10 mm
- 4 pc. 3/8" Dr. Star Bit Sockets: T40, T45, T50, T55
- 1 pc. 3/8" Dr. 72 Tooth Sealed Head Ratchet
- 2 pc. 3/8" Dr. Spark Plug Sockets: 5/8, 13/16"
- 1 pc. 3/8" Dr. Universal Joint
- 1 pc. 3/8" Dr. 3" Extension
- 1 pc. 3/8" Dr. 6" Extension
- 1 pc. 3/8" F X 1/4" M Adapter

1/2" DRIVE

- 6 pc. 1/2" Dr. SAE Sockets (12 Pt.): 1/2, 9/16, 5/8, 11/16, 3/4, 13/16"
- 5 pc. 1/2" Dr. Metric Sockets (12 Pt.): 14, 15, 17, 18, 19 mm
- 1 pc. 1/2" Dr. 72 Tooth Sealed Head Ratchet
- 1 pc. 1/2" Dr. 5" Extension
- 1 pc. 1/2" F X 3/8" M Adapter

SPECIALTY TOOLS

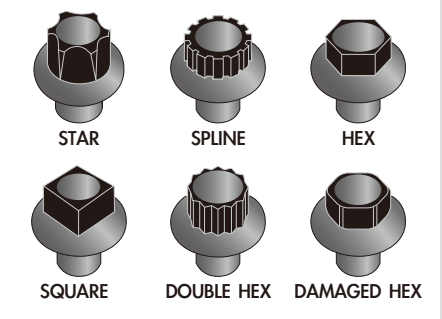
- 6 pc. SAE Extra Long Combination Wrenches: 5/16, 3/8, 7/16, 1/2, 9/16, 5/8"
- 6 pc. Metric Extra Long Combination Wrenches: 8, 10, 12, 13, 14, 15 mm
- 40 pc. Bits
 - 10 pc. Phillips: #0 (2x), #1 (2x), #2 (2x), #3 (2x), AD (2x)
 - 7 pc. Slotted: 1/8, 5/32, 3/16 (2x), 1/4 (2x), 5/16"
 - 3 pc. Square: #1, #2, #3
 - 7 pc. Star: T-10, T-15, T-20, T-25, T-27, T-30, T-40
 - 3 pc. Pozzi: PZ#1, PZ#2, PZ#3
 - 10 pc. Hex: SAE: 3/32, 1/8, 5/32, 3/16, 1/4" Metric: 3, 4, 5, 6, 7 mm
- 11 pc. SAE Hex Key Wrenches: 0.05, 1/16, 5/64, 3/32, 7/64, 1/8, 9/64, 5/32, 3/16, 7/32, 1/4"
- 11 pc. Metric Hex Key Wrenches: 1.27, 1.5, 2, 2.5, 3, 3.5, 4, 4.5, 5, 5.5, 6 mm


1
28 pc.
雙頭迷你棘輪萬用套筒組 - KBT0943
STUBBY DUAL HEAD RATCHET & UNIVERSAL SOCKET SET
1/4
CONTENTS
1/4" DRIVE

- 10 pc. 1/4" Dr. Metric Universal Sockets: 5, 5.5, 6, 7, 8, 9, 10, 11, 12, 13 mm
- 1 pc. 1/4" Dr. 72 Tooth Stubby Dual Head Ratchet
- 1 pc. 1/4" Magnetic Quick Release Bit Coupler
- 1 pc. 1/4" Dr. 3" Wobble Extension

SPECIALTY TOOLS

- 14 pc. Bits
 - 2 pc. Phillips: #2, #3
 - 2 pc. Slotted: 5, 6 mm
 - 1 pc. Square: #2
 - 1 pc. Pozzi: #2
 - 2 pc. Hex: 5, 6 mm
 - 6 pc. Star: T-10, T-15, T-20, T-25, T-30, T-40
- 1 pc. Strong Blow Molded Case


2

8pc.

損壞螺帽拆除套筒組 - 941322
ZEON SOCKET SET FOR DAMAGED BOLTS - METRIC

CONTENTS

- 1/4" DRIVE**
 4 pc. 1/4" Dr. Zeon® Metric Sockets: 6, 8, 10, 12 mm
- 3/8" DRIVE**
 4 pc. 3/8" Dr. Zeon® Metric Sockets: 13, 14, 15, 19 mm



DESIGNED TO BREAK LOOSE:

STANDARD BOLTS • RUSTED BOLTS • DAMAGED BOLTS • ROUNDED BOLTS



REMOVES UPTO 85% ROUNDED FASTENERS

5pc.

**損壞螺帽拆除
梅花開口板手組 - 940915**
ZEON WRENCH SET FOR DAMAGED BOLTS - METRIC

CONTENTS

- 5 pc. Zeon® Metric Wrenches: 6, 8, 10, 12, 14 mm



8pc.

損壞滑牙螺絲拆除套筒起子組 - 642575
ZEON HEX BIT SOCKET SET FOR DAMAGED BOLTS - METRIC

CONTENTS

- 1/4" DRIVE**
 4 pc. 1/4" Dr. Zeon® Metric Hex Bit Sockets: 3, 4, 5, 6 mm
- 3/8" DRIVE**
 4 pc. 3/8" Dr. Zeon® Metric Hex Bit Sockets: 7, 8, 9, 10 mm



DESIGNED TO BREAK LOOSE:

STANDARD BOLTS • RUSTED BOLTS • DAMAGED BOLTS • ROUNDED BOLTS



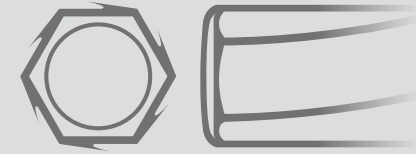
REMOVES UPTO 85% ROUNDED FASTENERS

9pc.

**損壞滑牙螺絲拆除
內六角板手組 - 642623**
ZEON HEX KEY WRENCH SET FOR DAMAGED FASTENERS - METRIC

CONTENTS

- 9 pc. ZEON® Metric Hex Key Wrenches: 1.5, 2, 2.5, 3, 4, 5, 6, 8, 10 MM



10 pc.

三分萬向套筒組 - 641715
3/8 IN. DR. UNIVERSAL JOINT SOCKET SET - METRIC

CONTENTS

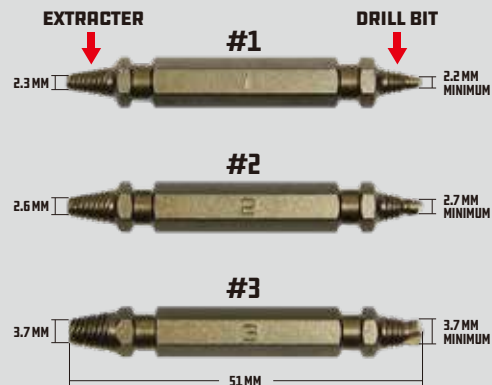
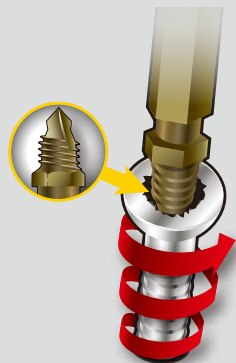
10 pc. 3/8" Dr. Metric Universal Joint Sockets (6 Pt.): 10, 11, 12, 13, 14, 15, 16, 17, 18, 19 mm



3 pc.

損壞螺絲取出器 - 941455
DAMAGED SCREW REMOVER SET

- Makes it easy to extract rusted, tripped or free-spinning screws in decks, lumber and metal
- All-in-one design saves time by drilling and extracting
- Includes 3 bits to extract damaged screws from #4 thru #14 and #10, 1/8 and 5/16" bolts
- Impact-rated chromoly steel is suitable for use with impact drivers
- Storage tray included

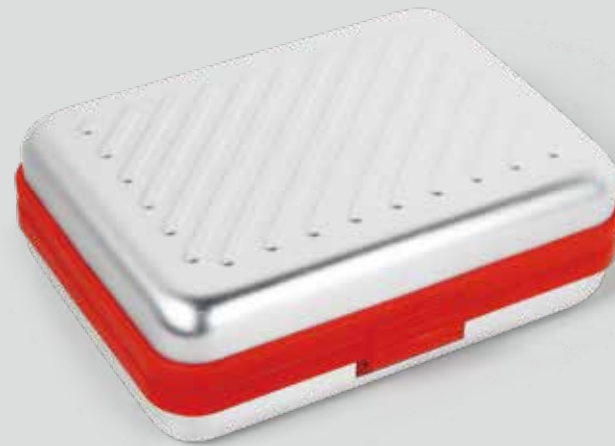


36 pc.

安全螺絲起子組 - 240378
SECURITY BIT SET

CONTENTS

- 1 pc. 1/4" x 25mm Adapter
- 1 pc. 1/4" x 60mm Quick Release Extension Bit Holder
- 34 pc. Bits
 - 4 pc. Tri-Wing: 1, 2, 3, 4
 - 3 pc. Torq: 6, 8, 10
 - 4 pc. Spanner: 4, 6, 8, 10
 - 6 pc. Metric Tamper Proof Hex: 2, 2.5, 3, 4, 5, 6 mm
 - 6 pc. SAE Tamper Proof Hex: 5/32, 9/64, 1/8, 7/64, 3/32, 5/64"
 - 11 pc. Tamper Proof Torx®: T-7, T-8, T-9, T-10, T-15, T-20, T-25, T-27, T-30, T-35, T-40



QUICK RELEASE

2 pc.

**短版兩分/三分
棘輪扳手組 - 640927
STUBBY RATCHET SET**

- DRIVE SIZE: 1/4 inch and 3/8 inch drive
- LENGTH: 1/4 inch drive is 3 3/8 inches long; 3/8 inch drive is 4 1/4 inches long
- DURABLE: Constructed from high grade chrome vanadium steel with a mirror polished chrome plated finish for durability and corrosion resistance
- PRECISION CRAFTED: Stubby size for easier reach into tight spaces and 72 tooth gear mechanism
- PROVEN TO PERFORM: Exceeds ANSI standards for quality and durability



3/8

1/4



3/8

1/4

**兩分套筒/起子頭兩用迷你棘輪
1/4 IN. DR. FINGER RATCHET - 941248**

**三分套筒/起子頭兩用迷你棘輪
3/8 IN. DR. FINGER RATCHET - 941264**

- DRIVE SIZE: 1/4 inch drive, 3/8 inch drive
- DIAMETER: 2 inches
- DURABLE: Constructed from high grade Chrome Vanadium steel with aluminum body with anodize finish
- PRECISION CRAFTED: Stubby size for easier reach into tight spaces, spin disc on ratchet head for one finger spin down/off, and 36 tooth gear mechanism
- PROVEN TO PERFORM: Meets ANSI standards

7

8 pc.

**套筒螺絲起子組 - W551078
NUT DRIVER SET**

CONTENTS

8 pc. 75mm Nut Driver: 5, 6, 7, 8, 9, 10, 11, 12 mm



2 pc.

**自動調整鴨掌萬能扳手組 - 240274
SPRING CROWFOOT WRENCH SET**



**THE JAW
RATCHET BACK
BETWEEN TURNS**

No need to remove the wrench from the workpiece between turns

3/8

5/16"-11/16"
(7.93 mm - 17.46 mm)

1/2

9/16"-1-1/4"
(14.28 mm - 31.75 mm)



8

8 PC.

三向T型六角英制扳手組 - 941644
T-HANDLE HEX KEY WRENCH SET - SAE

CONTENTS

8 pc. SAE T-Handle Hex Key Wrench: 5/64", 3/32", 1/8", 5/32", 3/16", 1/4", 5/16", 3/8"

8 PC.

三向T型六角公制扳手組 - 941645
T-HANDLE HEX KEY WRENCH SET - METRIC

CONTENTS

8 pc. Metric T-Handle Hex Key Wrench: 2, 2.5, 3, 4, 5, 6, 8, 10 mm

9 PC.

三向T型星形扳手組 - 941646
T-HANDLE TORX KEY WRENCH SET

CONTENTS

9 pc. T-Handle Torx Key Wrench: T-10, T-15, T-20, T-25 T-27, T-30, T-40, T-45, T-50



8"

四合一萬能卡環鉗 - 941336
QUICK SWITCH INTERNAL / EXTERNAL SNAP RING PLIERS

(20.32 cm)



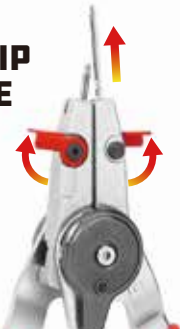
INTERNAL
 7/8" - 1-7/8"
 (22 mm - 48 mm)



EXTERNAL
 5/16" - 1-7/8"
 (8 mm - 48 mm)



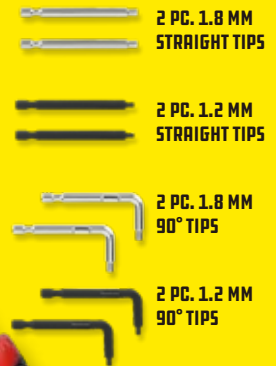
QUICK LATCH TIP RELEASE LEVER



TIP STORAGE



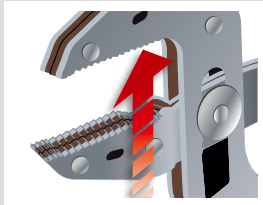
CHANGEABLE TIP



7"

自動調整萬能鉗 - 941311
SELF-ADJUSTING PLIERS

(17.78 cm)



3X QUICK
As Fast

4X RUGGED
Clamping
Power



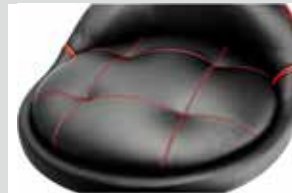
自動調整機油濾芯鉗 - 942068
SELF-ADJUSTING OIL FILTER PLIERS

- Auto-Adjust with One Hand Operation
- 3X Faster* - Jaws Auto-Adjust with One Hand Operation
- Rugged - Layered Steel Construction for Added Strength
- Ergonomic - Non-Slip Shaped Cushioned Grip for Comfort

WORK RANGE:
2-1/4" TO 4-3/4"
(5.72 cm - 12.06 cm)



舒適工具椅 - 240338
PADDED ROLLING SHOP SEAT
WITH LUMBAR SUPPORT



CAPACITY
330 LBS. / 149.7 KG

升降移動工具椅 - 240250
HEAVY DUTY ROLLING MECHANIC'S SEAT



CAPACITY
300 LBS. / 136.08 KG



專業移動工作椅 - 240036
HEAVY DUTY ROLLING WORK SEAT

- Super Duty 4" Rubber Casters 2 with Locks
- Removable Tool Organizing Trays On Each Side
- Includes Storage Drawer in the Middle
- Ribbed Non-Slip Top
- Product Dimension: 26.75" x 13" x 14.625" (68 x 33 x 37 cm)
- 300 LBS. / 136.08 KG Weight Capacity



CAPACITY
300 LBS. / 136.08 KG



汽修移動工作椅 - 941881ECE
ROLLING UTILITY SEAT

- Super Duty 4" Rubber Casters 2 with Locks
- Removable Tool Organizing Trays On Each Side
- Includes Storage Drawer in the Middle
- Comfortable Non-Slip foam seat
- Product Dimension: 21.25" x 15" x 15" (54 x 38 x 38 cm)
- 330 LBS. / 149.7 KG Weight Capacity



CAPACITY
330 LBS. / 149.7 KG



26"

專業斜角工具箱 - 240111

**RAPID BOX PORTABLE
SLANT FRONT TOOL BOX**

- **SAVE TIME:** The front-opening lid and stair-step interior make it easy to identify and grab the tool you need when you need it, and you can use the removable socket tray to bring your tools even closer to the jobsite
- **SAVE MONEY:** You could spend more on other slant front toolboxes, but with details like fully-welded seams, premium powder-coating and chrome-plated hardware, this box is top quality at an affordable price
- **KEEP YOUR TOOLS SAFE:** The lockable weather-resistant sealed lid protects your tools from weather and theft (so you can leave your tools in the box) and the heavy-duty polymer lid snugs down over your tools to keep them in place - even when driving off road.
- **BUILT TO LAST:** Constructed from heavy duty polymer and 16 gauge powder coated steel with fully, the box also features welded seams and chrome plated hardware
- **VERSATILE and PORTABLE:** Stow your rapid box on your truck, bench, in your shop or your trailer - anywhere you work or play



**STORE UP TO
154 *TOOLS**
(*TOOLS NOT INCLUDED)



**SPRING-LOADED
SIDE CARRY HANDLES**



CENTRAL LOCK CYLINDER



REMOVABLE SOCKET TRAY

**250 LBS. / 113.4 KG
WEIGHT CAPACITY**

專業六抽工具箱 - RMT0151

PROFESSIONAL SIX-DRAWER TOOL BOX



多功能工具袋 - 240253

5 ZIPPER POCKET ROLL UP TOOL BAG

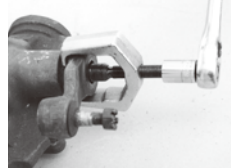


(TOOLS NOT INCLUDED)

5 PC.

橫拉桿球頭拆卸器 - 648626
FRONT END SERVICE KIT

- REUSE PARTS: Designed for safe efficient service of front end suspension systems with no damage to key parts
- COMES COMPLETE: Includes adapters for tie rods, pitman arms, and many other components
- EASY TO USE: Easily adjust and tune front end suspension systems
- COMES IN: Heavy duty blow molded case to keep set protected and organized
- INCLUDES: Comes with detailed instruction and usage photos



PITMAN ARM PULLER



BALL JOINT REMOVER



TIE ROD END PULLER



23 PC.

專業和尚頭工具組 - 648617
BALL JOINT & U-JOINT SERVICE KIT

- SAFE: The Powerbuilt 23 Piece Ball Joint/U Joint Service Set is designed for safe, efficient removal, and installation of "Press Type" Ball Joints
- VERSATILE: Industry leading adapter set allows ball joint and driveshaft service on multiple makes and models including 2 wheel drive, 4 wheel drive, SUVs, trucks, and many more
- INCLUDES: 2 socket adapters for removing and installing Chrysler "Threaded Type" Ball Joints



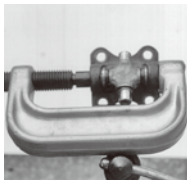
BALL JOINT REMOVAL



BALL JOINT INSTALLATION



U JOINT REMOVAL

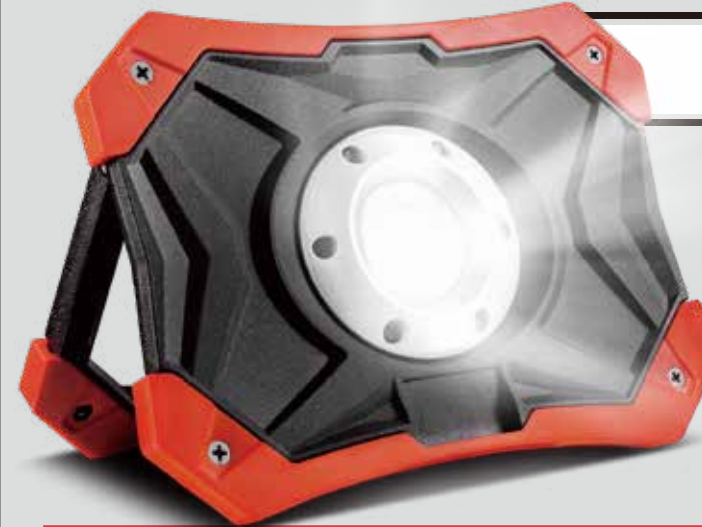


U JOINT INSTALLATION

4V

電動螺絲起子 - 240199
LITHIUM ION CORDLESS SCREWDRIVER
WITH REVOLVING BIT MAGAZINE

- Semi-Automatic Bit Changing Design, Change Bit in Seconds Through Revolver Magazine
- Integrated 6-Bit Drum Magazine Includes Most Common Bit Style/Sizes
- 1.5 AH Lithium-Ion Battery for Long Service Life
- Integrated LED Light for Illuminating the Work Area
- 3-LED Battery Capacity Indicators Display Battery Charge Level Status



1200 LUMENS

行動電源LED工作燈
RECHARGEABLE LED WORK LIGHT
WITH USB CHARGER - 642739

- 3 Settings (400/800/1200 Lumens)
- Battery Charge Level Indicators
- 6500K Bright White Light Provides Crisp Light and Strong Illumination
- Sealed Weather Resistant Lens Seals Out Dust and Moisture
- 5V/1A USB Charging Outlet
- Heavy-Duty Cast Aluminum Housing
- AC Charging Adapter and USB Cord Included

